

LED Area Lighting Luminaire SPECIFICATION (3000K@120-277V)



ORDER GUIDE

| | | | | | | | |
|---------|----|-----|----|----|----|---|----|
| Group | TL | UUU | VV | WW | XX | Y | ZZ |
| Example | AL | 160 | 5M | WW | VL | D | BZ |

| Group | Description |
|-------|---|
| RL | Represents LED Area Lighting ; |
| UUU | Represents input power, which can be 090, 160, 245, or 275, e.g., 160= 160 W ; |
| VV | Represents lens type, distinguished by different models, which can be 2M, 3M, 4M, 4S, 5M, 5S, or others. Type II (Full Cutoff) 2S (Short); 2M (Medium)* ; 2L (Long); Type III (Full Cutoff) 3S (Short); 3M (Medium)* ; 3L (Long); Type IV (Full Cutoff) 4S (Short); 4M (Medium)* ; 4L (Long); Type VS (Full Cutoff) 5S (Short); 5M (Medium)* ; 5L (Long). |
| WW | Represents the nominal Correlated Color Temperature, which can be CW Cool White 5000 K (± 300 K); NW Neutral White 4000 K (± 300 K); WW Warm White 3000 K (± 300 K)** ; |
| XX | Represents the input voltage: UL (120-277V), VL (120-240/277V)* , or UH (480V). |
| Y | Represents the dimming function, D (DALI)*, or P (Photocell). |
| ZZ | Represents the luminaire body color, which can be BK, BZ, GN, GY or WT BK Black (RAL 9017); BZ Bronze (RAL 8019)* ; GN Green (RAL 6005); GY Gray (RAL 7038); WT White (RAL 9010). |

* Featured products.

+ Warm-toned LED light sources (3000K or lower) must be selected to meet the International Dark-Sky Association dark sky requirements.

CERTIFICATIONS

| | | |
|--|---|-------------|
| SAFETY | Luminaires [UL 1598:2021 Ed.5] | Certified |
| SAFETY | Luminaires [CSA C22.2 No. 250.0:2021 Ed.5] | Certified |
| FCC | FCC Part 15 Subpart B; ANSI C63.4a-2017 | Certified |
| DIELECTRIC WITHSTAND AND ELECTRICAL TRANSIENT IMMUNITY | C136.2-2015: Clause 6, Clause 7, 7.1, 7.2, 7.3, 7.4 | Certified |
| INGRESS PROTECTION | Ingress protection | IP65 |
| THD | Max. Total Harmonic Distortion (%) | 20 |
| IMPACT TEST | Resistance to external mechanical impact test | IK10 |
| SALINE MIST TEST | Salt spray test to ISO 9227 | 1,000 hours |
| RoHS COMPLIANCE | European Directive 2011/65/EC | Certified |

SPECIFICATION

AL-160-VV-WW-VL-D-BZ (Two-Module)

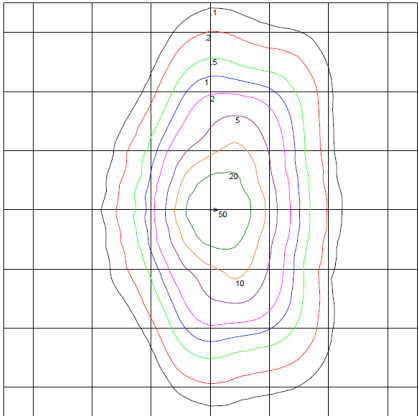
| | | |
|-------------------------|--|----------------------|
| VOLTAGE | Nominal luminaire input voltage range | 120-277 V |
| INPUT POWER | Nominal luminaire input power | 160.0 W ‡ |
| LUMINAIRE OUTPUT | Nominal luminaire luminous flux output | 22000 lm ‡ |
| EFFICACY | Nominal luminaire efficacy | 137.5 lm/W ‡ |
| POWER FACTOR | Min. power factor | 0.99 ‡ |
| LUMEN MAINTENANCE | Min. % of the initial output at 100,000 hours operation | L95.8 |
| • L90 | Estimated time reaching 90% of the initial luminous flux | > 102,000 hours |
| • L80 | Estimated time reaching 80% of the initial luminous flux | > 102,000 hours |
| • L70 | Estimated time reaching 70% of the initial luminous flux | > 102,000 hours |
| LMF | Luminaire maintenance factor used for simulation | 0.80 |
| CHROMATICITY SHIFT | LED chromaticity shift at 7,000 hours operation | 0.0015 Δu'v' |
| NOMINAL CCT | Nominal correlated color temperature | 3000 K |
| CRI | Color Rendering Index | > 70 |
| WEIGHT | Max. luminaire weight | 20.4 lbs. |
| DIMENSION | L x W x H | 26.3" x 11.4" x 5.6" |
| SAIL AREA | Max. effective sail area | 0.71 ft ² |
| TERMINAL BLOCK GAUGE | 6-Way Screw Down Terminal Blocks Wire Gauges | #14 AWG - #6 AWG |
| PCR | Photoelectric Control Receptacle | Toolless Rotatable |
| OPTICAL DISTRIBUTION | <input type="checkbox"/> Type II <input checked="" type="checkbox"/> Type III <input checked="" type="checkbox"/> Type IV <input checked="" type="checkbox"/> Type V | |
| MOUNTING SLIP FITTER | <input checked="" type="checkbox"/> Top-entry <input checked="" type="checkbox"/> Side-entry <input checked="" type="checkbox"/> Integral tilt (-10° to +10°) | |
| | Nominal Pole Size (NPS) | 1.25"/2" NPS |
| VIBRATION | ANSI C136.31 <input type="checkbox"/> Level 1 (normal) <input checked="" type="checkbox"/> Level 2 (bridge/overpass) | |
| THERMAL ENVIRONMENT | Typical min. ambient temperature during operation | -40 °C (-40 °F) |
| | Typical max. ambient temperature during operation | +40 °C (+104 °F) |
| SURGE PROTECTION DEVICE | ANSI C136.2 <input type="checkbox"/> Basic (6kV/3kA) <input checked="" type="checkbox"/> Enhanced (10kV/5kA) <input type="checkbox"/> Elevated, (20kV/10kA) | |
| CONTROL INTERFACE | <input type="checkbox"/> None <input type="checkbox"/> ANSI C136.10 3-pin <input type="checkbox"/> ANSI C136.41 5-pin <input checked="" type="checkbox"/> ANSI C136.41 7-pin | |
| LED DRIVER | <input type="checkbox"/> Not Dimmable <input type="checkbox"/> Dimmable, 0-10V (IEC 60929) <input checked="" type="checkbox"/> Dimmable DALI-2, D4i, NFC | |

‡ Values shown are subject to ±5% tolerance.



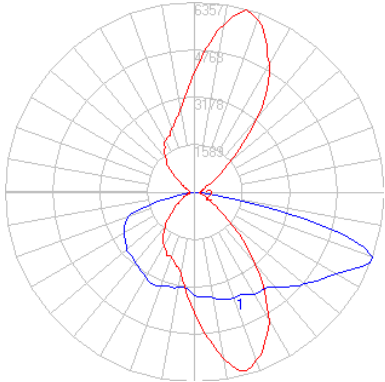
PHOTOMETRY

Type III Medium Full Cutoff

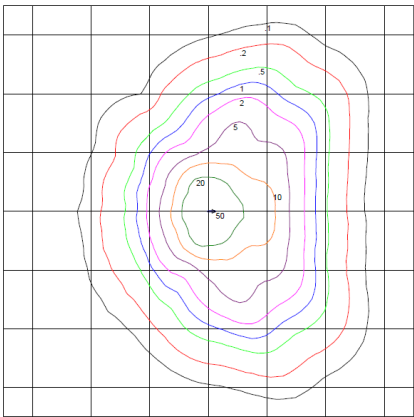


TransLEDer LLC
AL-160-3M-WW-VL-D-BZ

Horizontal Footcandles
Scale: 1 inch = 10 Ft.
Light Loss Factor = 1.00
Lumens Per Lamp = 22000
Total Lamp Lumens = 22000
Mounting Height = 10.00 Ft.
Maximum Calculated Value = 50.54 Fc
Arrangement: Single

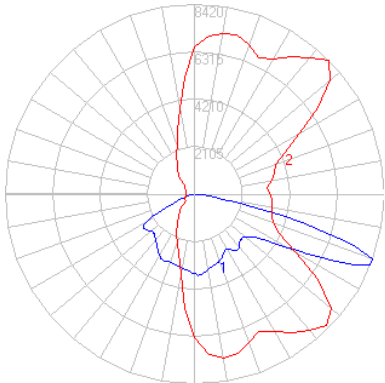


Type IV Medium Full Cutoff

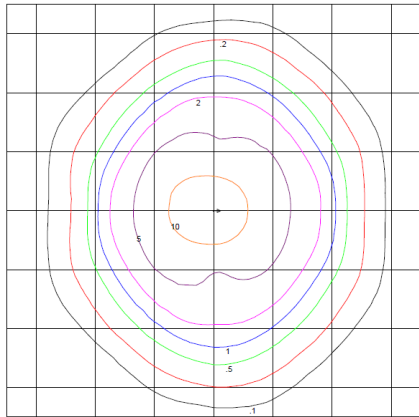


TransLEDer LLC
AL-160-4M-WW-VL-D-BZ

Horizontal Footcandles
Scale: 1 inch = 10 Ft.
Light Loss Factor = 1.00
Lumens Per Lamp = 22000
Total Lamp Lumens = 22000
Mounting Height = 10.00 Ft.
Maximum Calculated Value = 50.92 Fc
Arrangement: Single

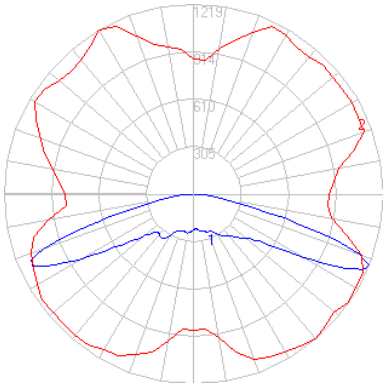


Type V Medium Full Cutoff



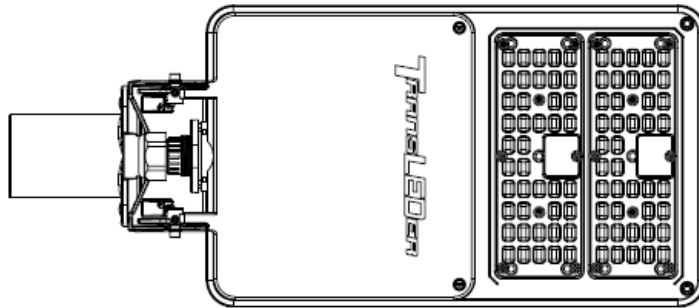
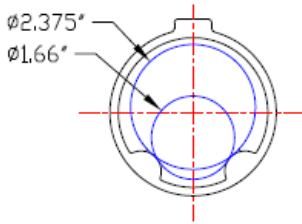
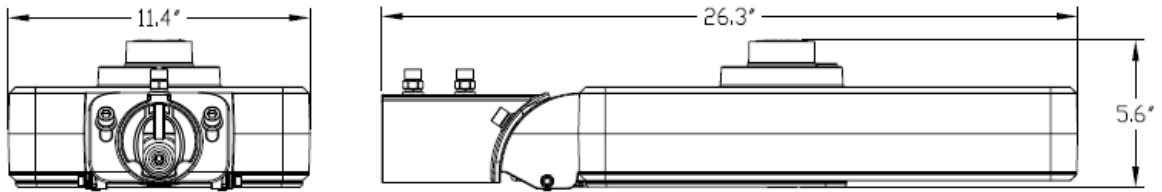
TransLEDer LLC
AL-160-5M-WW-VL-D-BZ

Horizontal Footcandles
Scale: 1 inch = 17 Ft.
Light Loss Factor = 1.00
Lumens Per Lamp = 22000
Total Lamp Lumens = 22000
Mounting Height = 10.00 Ft.
Maximum Calculated Value = 19.60 Fc
Arrangement: Single



DIMENSIONS

2-Module Model



FEATURES

