

## LED Area Lighting Luminaire SPECIFICATION (3000K@480V)



**ORDER GUIDE**

Group	TL	UUU	VV	WW	XX	Y	ZZ
Example	AL	245	5M	WW	UH	D	BZ

Group	Description
RL	Represents LED <b>Area Lighting</b> ;
UUU	Represents input power, which can be 090, 160, 245, or 275, e.g., 245= <b>245 W</b> ;
VV	Represents lens type, distinguished by different models, which can be 2M, 3M, 4M, 4S, 5M, 5S, or others.  Type II (Full Cutoff)    2S (Short); <b>2M (Medium)*</b> ;    2L (Long); Type III (Full Cutoff)    3S (Short); <b>3M (Medium)*</b> ;    3L (Long); Type IV (Full Cutoff)    4S (Short); <b>4M (Medium)*</b> ;    4L (Long); Type VS (Full Cutoff)    5S (Short); <b>5M (Medium)*</b> ;    5L (Long).
WW	Represents the nominal Correlated Color Temperature, which can be  CW                            Cool White    5000 K (± 300 K); NW                            Neutral White 4000 K (± 300 K); <b>WW</b> <b>Warm White</b> <b>3000 K (± 300 K)**</b> ;
XX	Represents the input voltage: UL (120-277V), VL (120-240/277V), or <b>UH (480V)*</b> .
Y	Represents the dimming function, D (DALI)*, or P (Photocell).
ZZ	Represents the luminaire body color, which can be BK, BZ, GN, GY or WT  BK                            Black            (RAL 9017); <b>BZ</b> <b>Bronze</b> <b>(RAL 8019)*</b> ; GN                            Green            (RAL 6005); GY                            Gray             (RAL 7038); WT                            White            (RAL 9010).

\* Featured products.

+ Warm-toned LED light sources (3000K or lower) must be selected to meet the International Dark-Sky Association dark sky requirements.

**CERTIFICATIONS**

SAFETY	Luminaires [UL 1598:2021 Ed.5]	Certified
SAFETY	Luminaires [CSA C22.2 No. 250.0:2021 Ed.5]	Certified
FCC	FCC Part 15 Subpart B; ANSI C63.4a-2017	Certified
DIELECTRIC WITHSTAND AND ELECTRICAL TRANSIENT IMMUNITY	C136.2-2015: Clause 6, Clause 7, 7.1, 7.2, 7.3, 7.4	Certified
INGRESS PROTECTION	Ingress protection	IP65
THD	Max. Total Harmonic Distortion (%)	20
IMPACT TEST	Resistance to external mechanical impact test	IK10
SALINE MIST TEST	Salt spray test to ISO 9227	1,000 hours
RoHS COMPLIANCE	European Directive 2011/65/EC	Certified

SPECIFICATION

AL-245-VV-WW-UH-D-BZ (Three-Module)

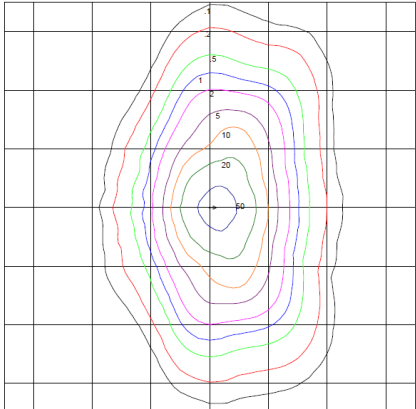
VOLTAGE	Nominal luminaire input voltage range	480 V
INPUT POWER	Nominal luminaire input power	245.0 W ‡
LUMINAIRE OUTPUT	Nominal luminaire luminous flux output	33400 lm ‡
EFFICACY	Nominal luminaire efficacy	136.3 lm/W ‡
POWER FACTOR	Min. power factor	0.99 ‡
LUMEN MAINTENANCE	Min. % of the initial output at 100,000 hours operation	L95.3
• L90	Estimated time reaching 90% of the initial luminous flux	> 102,000 hours
• L80	Estimated time reaching 80% of the initial luminous flux	> 102,000 hours
• L70	Estimated time reaching 70% of the initial luminous flux	> 102,000 hours
LMF	Luminaire maintenance factor used for simulation	0.80
CHROMATICITY SHIFT	LED chromaticity shift at 7,000 hours operation	0.0014 Δu'v'
NOMINAL CCT	Nominal correlated color temperature	3000 K
CRI	Color Rendering Index	> 70
WEIGHT	Max. luminaire weight	26.2 lbs.
DIMENSION	L x W x H	29.9" x 11.4" x 5.6"
SAIL AREA	Max. effective sail area	0.80 ft <sup>2</sup>
TERMINAL BLOCK GAUGE	6-Way Screw Down Terminal Blocks Wire Gauges	#14 AWG - #6 AWG
PCR	Photoelectric Control Receptacle	Toolless Rotatable
OPTICAL DISTRIBUTION	<input type="checkbox"/> Type II <input checked="" type="checkbox"/> Type III <input checked="" type="checkbox"/> Type IV <input checked="" type="checkbox"/> Type V	
MOUNTING SLIP FITTER	<input checked="" type="checkbox"/> Top-entry <input checked="" type="checkbox"/> Side-entry <input checked="" type="checkbox"/> Integral tilt (-10° to +10°)	
	Nominal Pole Size (NPS)	1.25"/2" NPS
VIBRATION	ANSI C136.31 <input type="checkbox"/> Level 1 (normal) <input checked="" type="checkbox"/> Level 2 (bridge/overpass)	
THERMAL ENVIRONMENT	Typical min. ambient temperature during operation	-40 °C (-40 °F)
	Typical max. ambient temperature during operation	+40 °C (+104 °F)
SURGE PROTECTION DEVICE	ANSI C136.2 <input type="checkbox"/> Basic (6kV/3kA) <input checked="" type="checkbox"/> Enhanced (10kV/5kA) <input type="checkbox"/> Elevated, (20kV/10kA)	
CONTROL INTERFACE	<input type="checkbox"/> None <input type="checkbox"/> ANSI C136.10 3-pin <input type="checkbox"/> ANSI C136.41 5-pin <input checked="" type="checkbox"/> ANSI C136.41 7-pin	
LED DRIVER	<input type="checkbox"/> Not Dimmable <input type="checkbox"/> Dimmable, 0-10V (IEC 60929) <input checked="" type="checkbox"/> Dimmable DALI-2, D4i, NFC	

‡ Values shown are subject to ±5% tolerance.

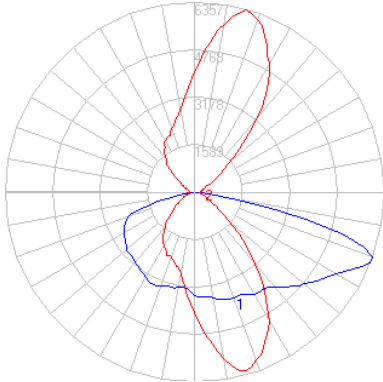


PHOTOMETRY

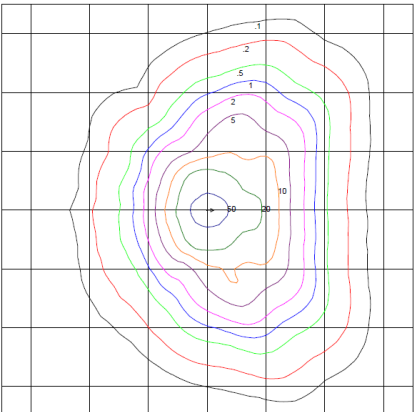
Type III Medium Full Cutoff



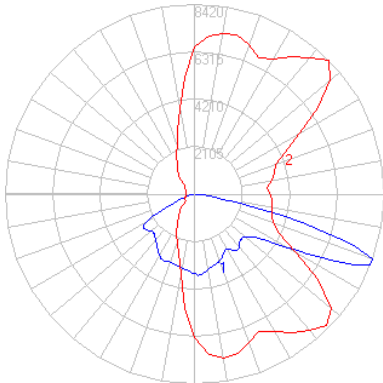
TransLEDer LLC  
AL-245-3M-WW-UH-D-BZ  
Horizontal Footcandles  
Scale: 1 Inch = 17 Ft.  
Light Loss Factor = 1.00  
Lumens Per Lamp = 33400  
Total Lamp Lumens = 33400  
Mounting Height = 10.00 Ft.  
Maximum Calculated Value = 76.73 Fc  
Arrangement: Single



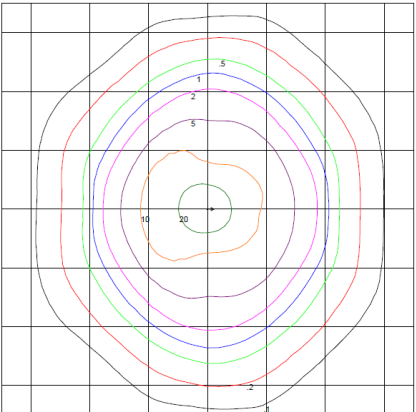
Type IV Medium Full Cutoff



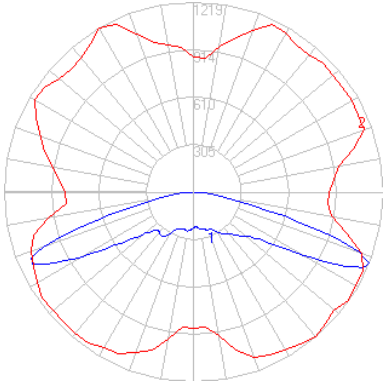
TransLEDer LLC  
AL-245-4M-WW-UH-D-BZ  
Horizontal Footcandles  
Scale: 1 Inch = 17 Ft.  
Light Loss Factor = 1.00  
Lumens Per Lamp = 33400  
Total Lamp Lumens = 33400  
Mounting Height = 10.00 Ft.  
Maximum Calculated Value = 77.31 Fc  
Arrangement: Single



Type V Medium Full Cutoff

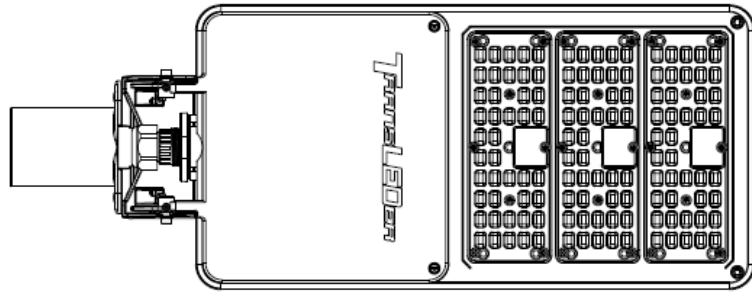
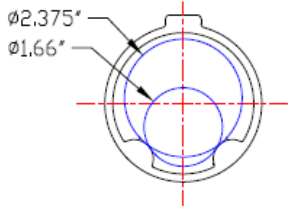
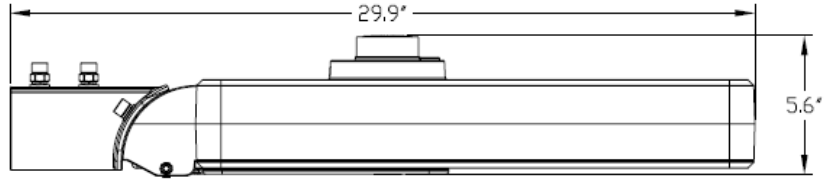
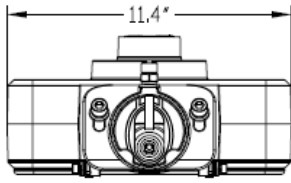


TransLEDer LLC  
AL-245-5M-WW-UH-D-BZ  
Horizontal Footcandles  
Scale: 1 Inch = 16 Ft.  
Light Loss Factor = 1.00  
Lumens Per Lamp = 33400  
Total Lamp Lumens = 33400  
Mounting Height = 10.00 Ft.  
Maximum Calculated Value = 29.76 Fc  
Arrangement: Single



**DIMENSIONS**

**3-Module Model**



**FEATURES**

